

ENLIGHTENMENT THROUGH EMPOWERMENT



THE INSPIRATION

Param Pujya Shree Premacharyaji (fondly known to all as Param Pujya Pappaji), Founder of the Asiatic Group of companies at a young age of 25, has been an enterprising individual since youth. His exemplary thinking power and profound knowledge on “karm science” unfolded his spiritual side.

As a mark of gratitude to his Master, he founded Asiatic Charitable Trust in 1973, Shree Rajanuyayi Charitable Trust in 1974, Shrimad Rajchandra Atma Tatva Research Centre in 2000 and Shramik Naari Sangh in 2004, all registered under The Bombay Public Trusts Act.

The Trusts are engaged in humanitarian activities with the underlying vision to energize communities with the true understanding and powers of the 'Self' through the time-tested philosophy of '*Vitraag Vigyaan*', which is simple to comprehend and adhere in day-to-day life. The followers of this philosophy have been able to successfully strike a good work-life balance, have healthy relationships at work place, participate in betterment of society and overcome any kind of stress through the right thought-process and corresponding action.

The successor-designate Shri Nilesh Mehta leads the Trusts and is ably supported by the Board of Trustees for all socio-economic welfare projects initiated by them.



SHREE RAJ EDUCATIONAL CENTRE

Shree Raj Educational Centre provides quality education to less-privileged rural children at Parli – the first English medium school in entire Sudhagad Taluka.

- 1050+ students (academic year 2018-19) 90 neighbouring villages over 40 km radius take benefit of this highly subsidized education.
- 40% of students are girls – inspite of being a rural area.
- Fully equipped with Computer Lab, Dance & Music Academy, Library, Biology, Physics, Chemistry Labs, Activity rooms, Work-experience rooms & Staffrooms.
- Computers & E-learning initiated from 1st Standard.
- Free uniforms, shoes, textbooks, notebooks, healthy protein-rich mid-day snack and subsidized transport provided.
- Well-trained B.Ed. teachers
- Entire facility fire compliant and kept under 24x7 CCTV surveillance.



- Rated 9/10 under the RTE Ratings by Govt. of Maharashtra on their website.
- First 'Green school' in the Taluka by adapting to Solar Power generation.
- Our effort to promote rural education– "Education First" has been recognized by "A World at School" – an international campaign in 85 countries.



SHREE RAJ MEDICAL CENTRE

The Medical & Dental Clinic at Parli provides specialized healthcare services to less-privileged villagers from 100 villages over a 50 km radius. Highly qualified Doctors from specialized fields like Gastroenterology, ENT, Dentistry, Skin & Homeopathy visit on a regular basis to offer their services at highly subsidized rates, in addition to a full time GP.

- Free diagnostic, curative & preventive camps conducted regularly since 2006.
- Counselling, one-to-one interaction & regular follow-ups are done.
- Specialty camps & advanced treatment provided in association with reputed Institutes like Jupiter Hospital, Tata Memorial, Cancer Patients Aid Association (CPAA), etc.
- 6000+ villagers & tribal population have been benefitted so far.

MEGA EYE CAMPS

5000+ patients examined
1400+ free Cataract surgeries performed
2000+ free spectacles distributed

ENT CLINIC

500+ villagers examined

HOMEOPATHY CLINIC

400+ patients treated

CANCER SCREENING CAMPS

200+ villagers screened

GENERAL PHYSICIAN CLINIC

950+ patients treated

DENTAL CLINIC

800+ villagers treated

GYNAECOLOGY CAMPS

100+ women benefitted

PAEDIATRIC CAMPS

400+ children benefitted

TYPHOID & INFLUENZA VACCINATION CAMPS

600+ villagers & 300+ children vaccinated

HEPATITIS B VACCINATION CAMPS

430+ villagers vaccinated

SUPER-SPECIALTY CARDIOLOGY CAMP

200+ villagers examined

SKIN CLINIC

140+ patients treated



SHRAMIK NAARI SANGH

Shramik Naari Sangh undertakes economic empowerment of under-privileged & needy women to enable them earn a livelihood, support their families & become independent. Training and employment opportunities are provided in manufacturing various products & corporate gift packs through its brands 'Chaakri', 'Divinite', 'Puro' and 'Udaan'. Sa-Ni-Sa has been covered by BBC World News for the change it has brought about in the lives of the women at Parli through welfare initiatives like medical check-ups, daily brunch, sanitary napkin distribution, yoga, etc.

CHAAKRI - Premium khakhras



- Women at our Gruh Udyog in Parli manufacture Khakhras (roasted crispies) – made with 100% whole grains and natural ingredients while adhering to stringent quality control processes and hygiene standards.
- Chaakri Khakhras retail at leading supermarkets, stores, hospitals and corporate houses across the country and abroad.
- The Khakhras are FSSAI approved and of the highest quality.

PURO - Handcrafted bath & body products

- A vast range of non-toxic, handcrafted bath and body care products made from 100% vegetarian ingredients.
- All products are cruelty free – no animal by-products & no testing on animals.
- Prepared using the richest & highest quality ingredients to set a benchmark in body care products industry.
- FDA approved, available on leading online portals and also supplied to leading Spa Chains and Hotels across the country.



DIVINITE - Handmade chocolates

- Premium hand-made chocolates manufactured for social and corporate gifting.
- Unique flavours combined with decadent chocolate for pure indulgence such as exotic fruit range, spice range, in addition to the classic crystal range.
- All chocolates are FSSAI approved.
- Attractive packaging with an international appeal – bought by leading corporate entities and business houses.

UDAAN - Handicrafts & paper jewellery



- A latest addition is exquisite, trendy and handcrafted paper jewellery.



SHREE RAJ ROTI CENTRE



Shree Raj Roti Centre is food service program which provides meals to the poor, needy, unwell and old-age category of people at a highly subsidized rate of Rs. 10/- per meal. Meals comprising of 6 Rotis, 1 Vegetable, 1 portion of Dal & Rice and 1 Fruit are provided in tiffins.

- Started 14 years ago – first Centre at Mulund, Mumbai.
- 200 people benefitted 365 days a year.
- Due care taken to screen deserving people.
- Currently operational at
 - Mumbai – Mulund (West), Matunga (C.R.) and Borivli (East).
 - Victoria Blind School Tardeo, Mumbai – 140 blind students are provided full day meals (breakfast, lunch and dinner) free of cost.
 - Kolkata (at Research Centre).
 - Hyderabad (at Kachiguda, Barkatpura).
- We are geared to open more such distribution centres across the country.

NEWSPAPER COLLECTION



Volunteers, young and old alike, in 15 cities across India visit neighbouring residential complexes and offices to collect old newspapers and paper waste on weekends or pre-set days. All proceeds go towards the socio-economic activities and bring smiles into lives of the under-privileged. Newspapers and magazines collected are also used to make paper bags, paper jewellery and allied products.

YOUTH DEVELOPMENT - RAJ INTERNATIONAL YOUTH FORUM

This forum encourages the youth to become more responsible towards their family and the country and inculcate seva bhaav in them. It helps youngsters develop a spirituality based logical and scientific outlook to face the complexity of life with a positive approach. The strength of RIYF has been growing each year and they actively participate in all the spiritual and socio-economic welfare projects of the Trusts across India.



VITRAAG VIGYAAN – THE SCIENCE OF DETACHMENT



RESEARCH CENTRE AT RAJ NAGAR, PARLI

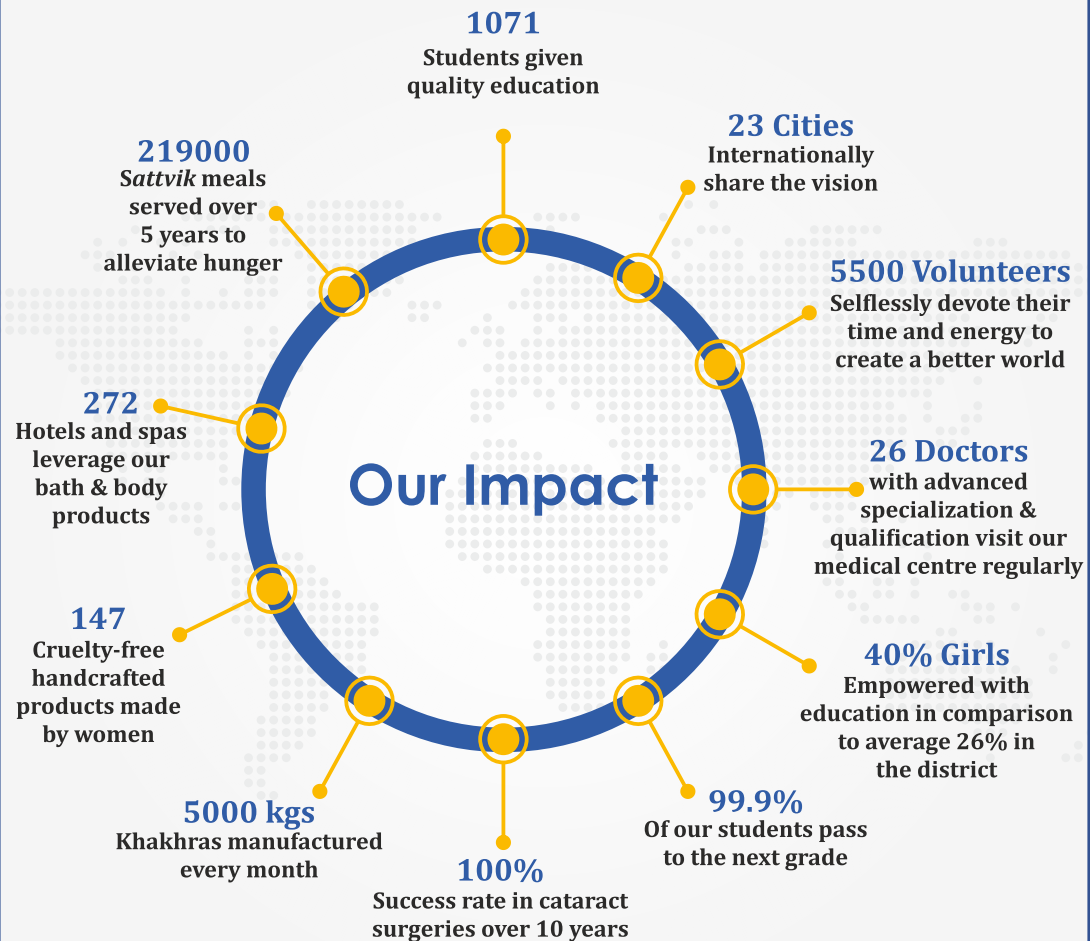
All humanitarian activities are guided by the 'Vitraag Vigyaan' philosophy – the eternally complete scientific path to experience peace, compassion and bliss.

Spiritual retreats (shibirs) are conducted round the year to encourage individuals to experience and recognize the true 'Self'. Weekly knowledge sessions (gyaan sabhas) are conducted at various cities in India and abroad.

'Essence of Life' lessons : Empowerment retreats on subjects such as 'The Power of Inspiration', 'The Power of Right Understanding', 'Achieving your goal through the power of concentration', 'Art of Relationship Management', 'The principles of Karma' and likewise topics conducted by senior sadhaks brings together people from all walks of life with the common objective to enlighten the Self and the Society.



RESEARCH CENTRE AT KOLKATA



FUTURE PLANS

EDUCATION:

- International College, in affiliation with University of Cambridge.
- Hostel accommodation for boys and girls.
- Sports Complex of international standard.

HEALTHCARE:

- State-of-the-art Hospital that will benefit over 10,000 patients.
- Pathology laboratory that would offer over 500 tests.
- Dialysis Centre.

WOMEN EMPOWERMENT

- Factory of 20,000 sq. ft. for manufacturing Khakhras.
- Papad manufacturing unit.
- Agarbatti and incense sticks manufacturing unit.

THE DREAM

By 2020, fifty thousand lives will be directly benefitted through the future plans under various initiatives.

We aim to build an ecosystem through our volunteers to ensure that we provide the tools to help these individuals lead healthy and productive lives which will help them to lift themselves out of poverty and empower them to survive and thrive.

We know our resources alone are not enough. We need financial support to expand our impact. We look forward to partner with you to foster inclusive growth.

When brilliant goals, hearts and intent come together, expect a miracle!



OUR CENTRES FOR SOCIAL & SPIRITUAL DEVELOPMENT

- | | | |
|---------------|----------------|----------------------|
| 1. AGRA | 8. DELHI | 15. MUMBAI |
| 2. AHMEDABAD | 9. DHULE | 16. PONDICHERRY |
| 3. ANAND | 10. HUBLI | 17. PUNE |
| 4. BARODA | 11. HYDERABAD | 18. RAIPUR |
| 5. BENGALURU | 12. JABALPUR | 19. RAJKOT |
| 6. CHENNAI | 13. JAMSHEDPUR | 20. RAJ NAGAR, PARLI |
| 7. COIMBATORE | 14. KOLKATA | 21. RAJNANDGAON |

OUR INTERNATIONAL CENTRES:

1. U.S.A. 2. CANADA 3. U.K. 4. DUBAI

DONATIONS TO ALL THE TRUSTS ARE ELIGIBLE FOR 50% TAX EXEMPTION UNDER SECTION 80G OF THE INCOME TAX ACT, 1961

**Shrimad Rajchandra Aatma
Tatva Research Centre**

Shramik Naari Sangh

Asiatic Charitable Trust

**Shree Rajanuyayi
Charitable Trust**

RESEARCH CENTRE

Raj Nagar, Parli, Post Gothavade, Taluka
Sudhagadh, Off Khopoli - Pali Road, Dist.
Raigad - 410 205, Maharashtra, India.

ADMIN OFFICE 'MISSION 2020'

402, Parmeshwari Centre, Off M. M. Malviya
Road, Near MTNL Exchange, Mulund (West),
Mumbai - 400080.

To participate and make a difference to the society, please reach out to us.

www.mission2020.me | care@mission2020.me | +91-90763 72020